

GEOSPATIAL RESEARCH LABORATORY



1 of 7 Labs in the U.S. Army Corps of Engineers & the Engineering Research & Development Center (ERDC)



A unified team of civilian Scientists & Engineers

conducting **basic & applied** research to develop innovative technical solutions for Army soldiers to gain a complete understanding of the battle space & environment

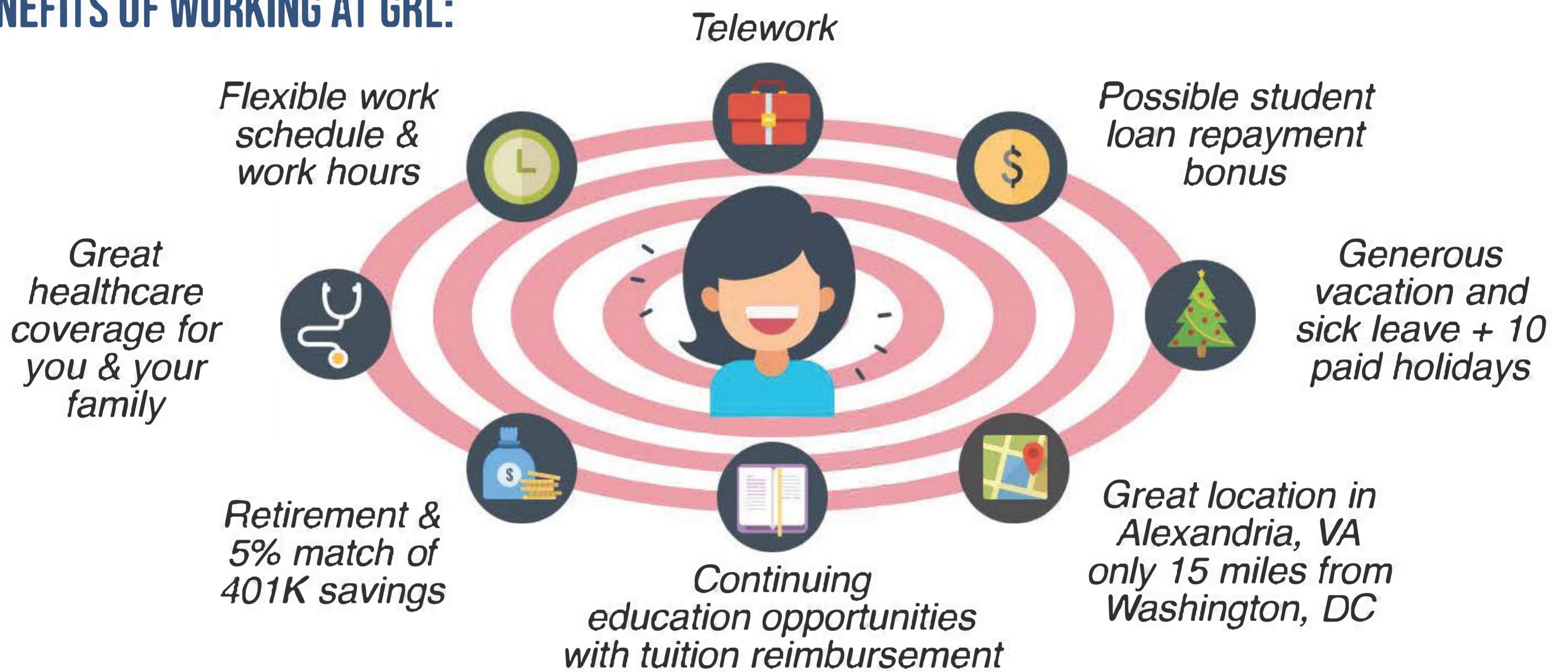
engaging professional work culture & environment



80% of our scientists & engineers hold advanced degrees & are **experts in their fields**

- Computer Scientists
- Mathematicians
- Software Developers
- Geographers
- Data Scientists
- Electrical Engineers
- Social & Physical Scientists

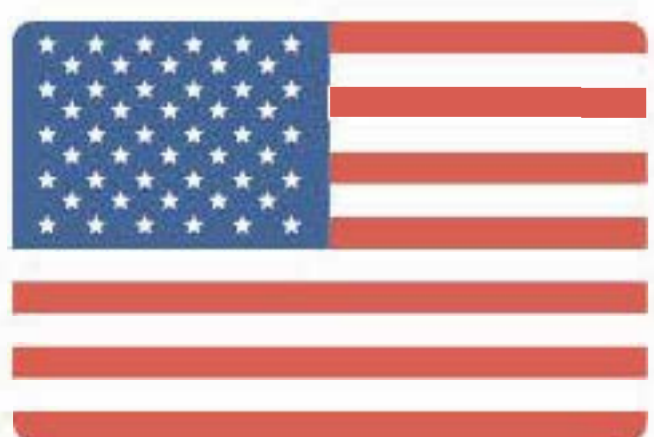
BENEFITS OF WORKING AT GRL:



WE ARE CURRENTLY SEEKING:

FULL-TIME Employees can be **direct hired** in fields of:

- Software Development
- Data Science & Analytics
- Artificial Intelligence
- Machine Learning/Deep Learning
- Robot Operating Systems
- Remote Sensing
- LiDAR Technology
- Autonomous Vehicle Communication



U.S. Citizens Only
Must be able to qualify for security clearance

2021 SUMMER INTERNS

Students are encourage to apply to available program openings:

CQL Apprenticeship for undergraduates through the Army Education Outreach Program's Summer and year-round positions
<http://www.usaeop.com>



Mathematical Sciences Graduate Internship (MSGI) for doctoral students through the National Science Foundation
<https://orise.orau.gov/nsf-msgi>



www.erd.c.usace.army.mil



@ArmyERDC



keyword: ArmyERDC